

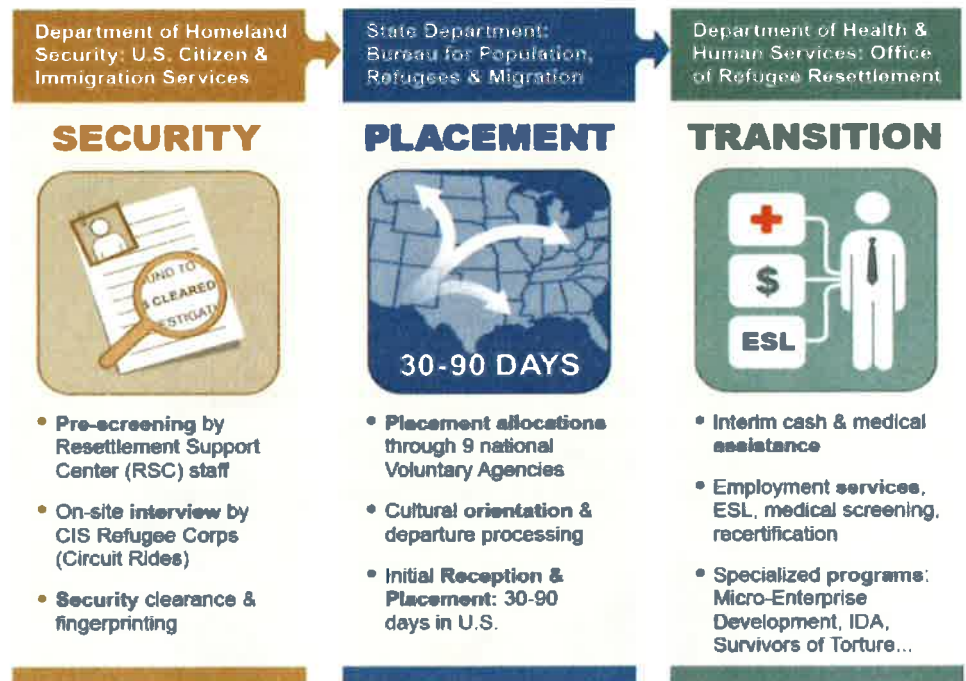
U.S. REFUGEE RESETTLEMENT OVERVIEW

The refugee resettlement process to the United States begins with the Office of United Nations High Commissioner for Refugees (UNHCR)*, where identifying documents and bio data on individuals seeking refugee status are initially collected and assessed. If the need for resettlement is determined and the individual(s) is a strong candidate, additional screening is conducted and a referral to the United States for resettlement is made. *Note: not all cases are referred from UNHCR

Cases are first received and processed by one of nine world-wide Resettlement Support Centers (RSC) which are funded by the U.S. Department of State's Bureau of Population, Refugees and Migration (PRM). Under PRM's guidance, the RSCs prepare eligible refugee applications for U.S. Resettlement consideration.

SECURITY

- Once refugees are referred to an RSC, the screening process continues in coordination with the Department of Homeland Security: U.S. Citizen & Immigration Services (USCIS).
- Applicant files are created with identifying documents collected; file prepared for biographic security check.
- USCIS agencies screen the candidate against several security databases (FBI, State Department, Counterterrorism).
- Interviews are conducted by specially trained USCIS Officers, fingerprints are collected and biographic security check information is completed.



Graphic Source: Office of Refugee Resettlement

PLACEMENT

- If an applicant is cleared for resettlement, a medical screening is conducted and any treatment needed for communicable diseases is provided.
- An assessment is done to determine which resettlement location within the US is best for the applicant (factors include family/community ties, medical needs, etc.); cultural orientation classes are provided during this phase prior to placement.
- The RSC works with the International Organization for Migration (IOM) to make travel arrangements to the US and make connections with the Resettlement Agency that will be meeting the applicants upon arrival.
- USCIS may conduct a final screening prior to entry into the U.S.

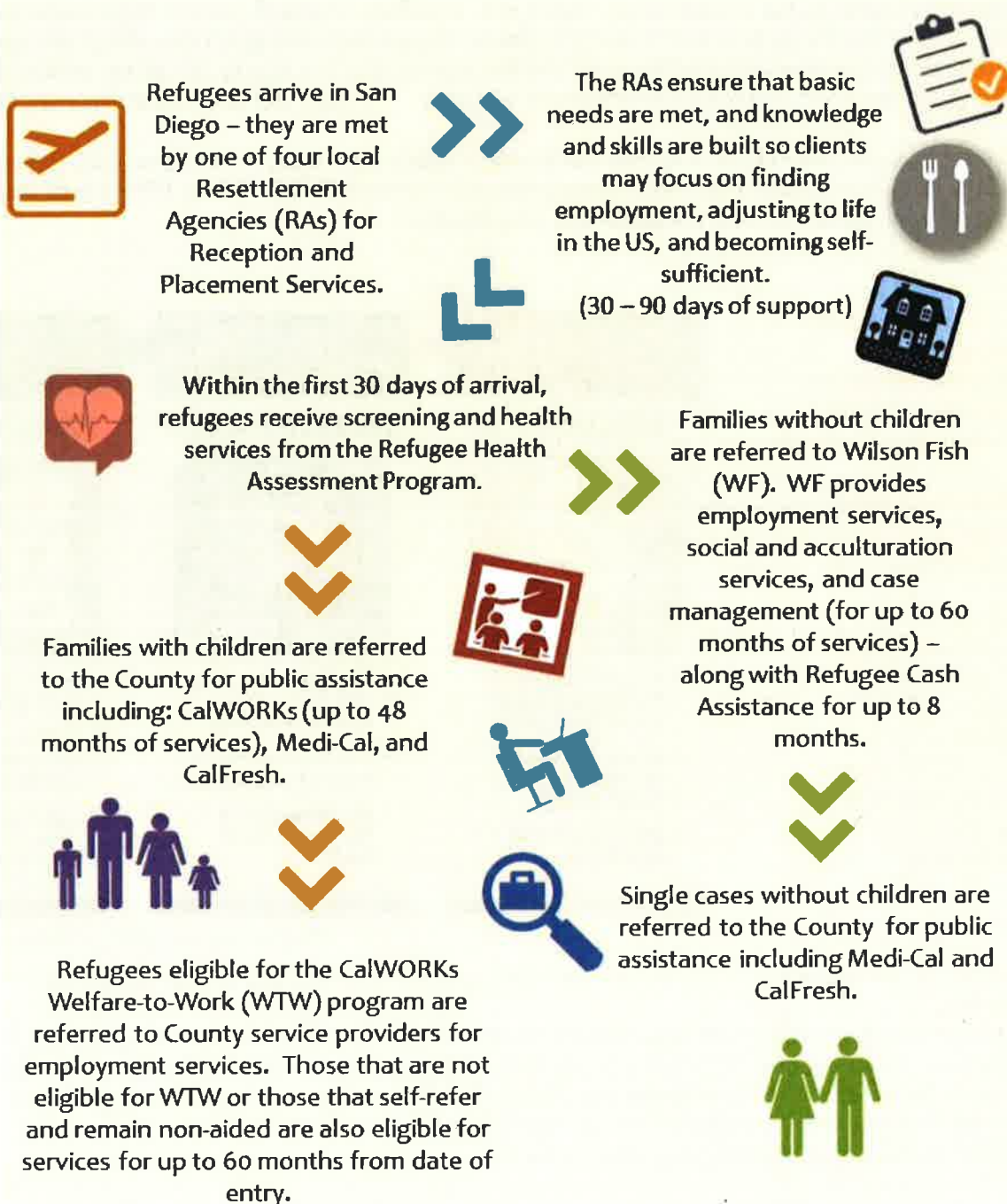
TRANSITION

- Individuals/families are met by Resettlement Agencies at the airport to welcome them and begin reception and placement services.
- The reception and placement services include, but are not limited to: assistance with housing, application completion for Social Security Cards, drivers licenses, and public assistance, enrollment of children into school, English language training and connection to community resources.

For more information about the U.S. Refugee Admissions Program, visit the following:

- Office of Refugee Resettlement: www.acf.hhs.gov/programs/orr
- US Department of State: www.state.gov
- UNHCR: www.unhcr.org

SAN DIEGO REFUGEE RESETTLEMENT PROCESS



- San Diego County's Resettlement Agencies**
- Alliance for African Assistance
 - Catholic Charities Dioceses of San Diego
 - The International Rescue Committee, Inc.
 - Jewish Family Service, Inc.

- The County of San Diego's Welfare-to-Work Service Providers**
- East and South Regions: Public Consulting Group, Inc. (PCG)
 - Central and North Regions: ResCare, Inc.

For more information about refugee services in San Diego, visit the following:
 San Diego Refugee Forum: www.sdrefugeeforum.org
 The County of San Diego, Community Action Partnership:
http://www.sandiegocounty.gov/hhsa/programs/sd/community_action_partnership

COUNTY OF SAN DIEGO

REFUGEE EMPLOYMENT SERVICES

OVERVIEW



Refugee Employment Services (RES) is a program available to assist eligible refugee families to achieve self-sufficiency through employment. RES is administered by the County of San Diego, Health and Human Services Agency's Community Action Partnership (CAP).



Who is Eligible for RES?

- Employment ready CalWORKs participants and some post-aid individuals whose immigration status is Refugee, Asylee, Certain Cuban and Haitian Entrants, and Trafficking and Crime Victims.
- Services for refugees are available for up to 60 months after arrival to the United States.

How do RES and Welfare-to-Work (WTW) Intersect?

- Programs are administered by the same Employment Services providers (PCG & ResCare).
- Employment Services staff determine eligibility to participate in RES.
- Supportive services (Child Care, Transportation and Ancillary) paid through WTW while client is eligible to CalWORKs.

What Services are Provided with RES?

- All services provided via RES are employment related to lead to job placement and retention.
- Four main categories: employment (job club, career oriented workshops, job development, search, referral and placement, vocational training), English language training (including vocational), case management, and other (information and referral services, translation, acculturation).

How do Refugees Locate Our Services?

- Generally, refugees are referred to the various HHS services through the Resettlement Agencies or other partner organizations within the county.
- Applicants can apply for HHS programs online, by telephone, by mail, fax or in person:
 - Online by accessing the Benefits CalWIN website: www.MyBenefitsCalWin.org
 - Call 2-1-1 San Diego; www.211SanDiego.org
 - Call ACCESS at 1 (866) 262-9881 to request application forms
 - Download applications for [CalFresh](#), [CalWORKS](#), [Medi-Cal](#) at www.AccessBenefitsSD.com
 - Visit your local [Family Resource Center](#) and request an application



For more information about refugee services in San Diego, visit the following:

San Diego Refugee Forum: www.sdrefugeeforum.org

The County of San Diego, Community Action Partnership:

http://www.sandiegocounty.gov/hhsa/programs/sd/community_action_partnership

COUNTY OF SAN DIEGO

REFUGEE EMPLOYMENT SERVICES

OVERVIEW



What are Other Programs for Refugees Administered by CAP?

- Project SHINE – intergenerational program through the Grossmont-Cuyamaca Community College District to promote self-sufficiency through increased health literacy, access to health services, and community integration.
- EMASS – older refugee focused program through Union of Pan Asian Communities (UPAC) to provide outreach, peer mentoring support, linkage to social and health services socialization, acculturation, and reduction of isolation.
- Vocational English-As-A-Second Language (VESL) – a language skills and employment focused program through the IRC that focuses on supporting refugee families to acquire the necessary skills to obtain a job as quickly as possible and develop a plan to upgrade their employment for more hours, better pay and benefits so they can achieve self-sufficiency.
- Work Readiness Exchange (WRE) - work readiness training through the National Conflict Resolution Center (NCRC) to teach participants conflict management strategies, communication skills, and job-related life skills. WRE teaches quality habits to be a good employee, build the capacity in the refugee community to reduce conflict, avoid violence and create a healthier community.

Are there Services Other than Public Assistance Benefits for Refugee Families?

Resettlement Agencies can choose to put refugees in the Matching Grant program instead of referring them to the County or to Wilson-Fish. Matching Grant provides extended resettlement services enabling refugees to achieve economic self-sufficiency without accessing public cash assistance. Match Grant services will preclude refugees from applying for Refugee Cash assistance (RCA) or other public cash assistance for at least the first four months after arrival or eligibility.

Services are offered for up to 180 days after arrival.

Who are the Refugee Resettlement Agencies in San Diego County?

- Alliance for African Assistance
- Catholic Charities Dioceses of San Diego
- The International Rescue Committee, Inc.
- Jewish Family Service, Inc.



Who are the Welfare to Work Service Providers in San Diego County?

- East and South Regions: Public Consulting Group, Inc.
- Central and North Regions: ResCare, Inc.

For more information about refugee services in San Diego, visit the following:

San Diego Refugee Forum: www.sdrefugeeforum.org

The County of San Diego, Community Action Partnership:

http://www.sandiegocounty.gov/hhsa/programs/sd/community_action_partnership